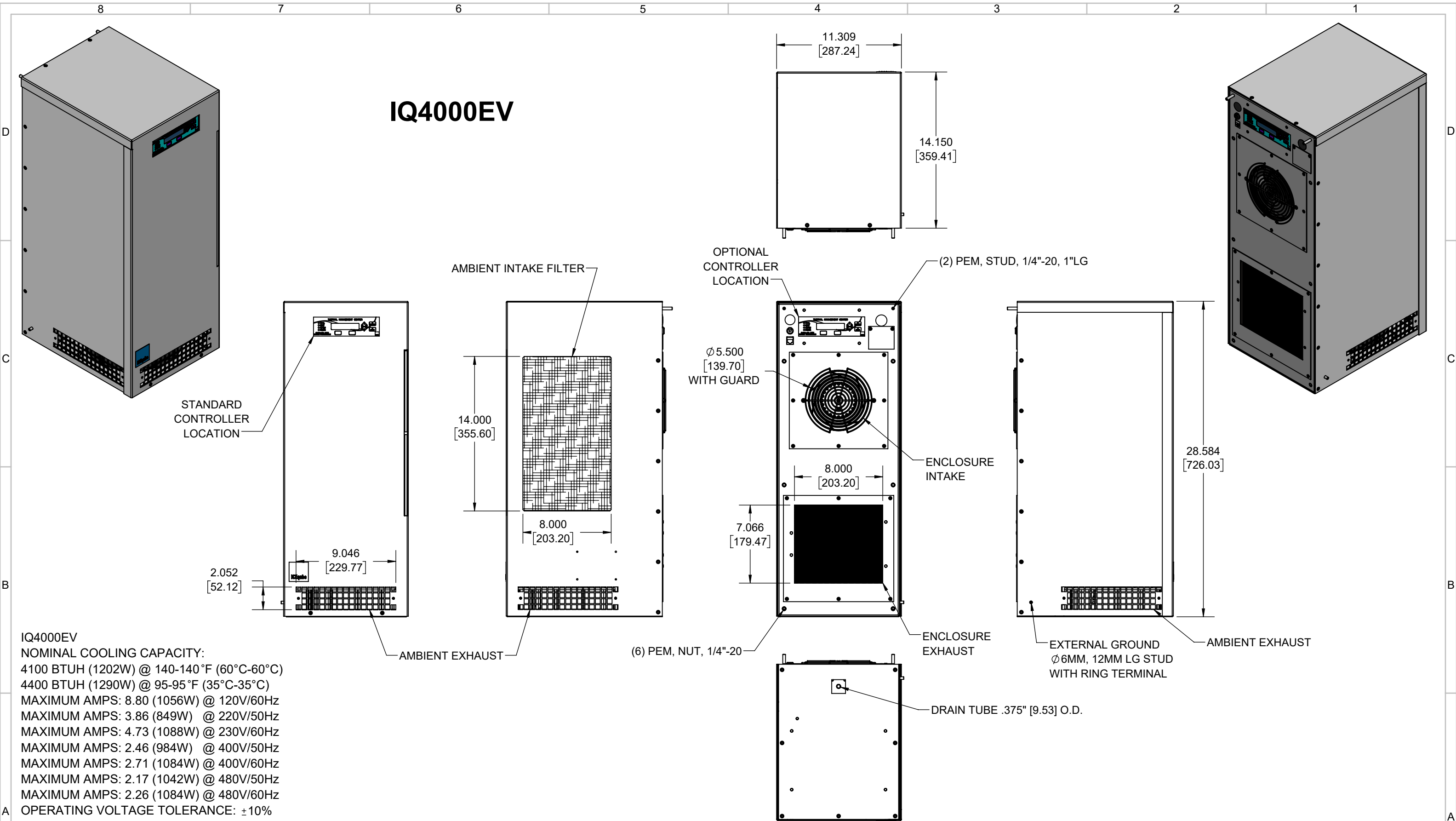


IQ4000EV



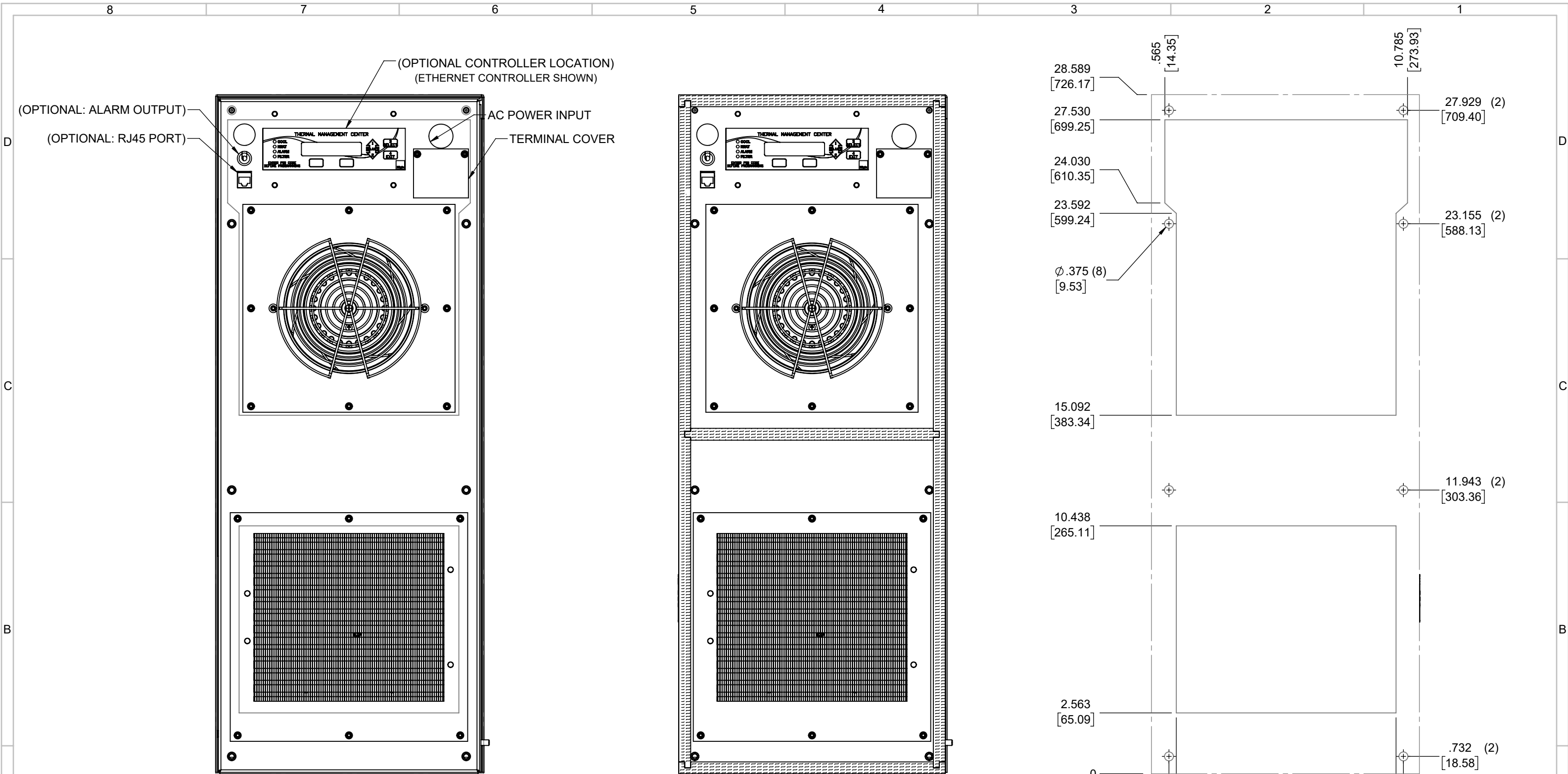
IQ4000EV
 NOMINAL COOLING CAPACITY:
 4100 BTUH (1202W) @ 140-140°F (60°C-60°C)
 4400 BTUH (1290W) @ 95-95°F (35°C-35°C)
 MAXIMUM AMPS: 8.80 (1056W) @ 120V/60Hz
 MAXIMUM AMPS: 3.86 (849W) @ 220V/50Hz
 MAXIMUM AMPS: 4.73 (1088W) @ 230V/60Hz
 MAXIMUM AMPS: 2.46 (984W) @ 400V/50Hz
 MAXIMUM AMPS: 2.71 (1084W) @ 400V/60Hz
 MAXIMUM AMPS: 2.17 (1042W) @ 480V/50Hz
 MAXIMUM AMPS: 2.26 (1084W) @ 480V/60Hz
 OPERATING VOLTAGE TOLERANCE: \pm 10%
 OPERATING FREQUENCY TOLERANCE: \pm 3HZ
 MAXIMUM OPERATING TEMPERATURE: 140°F (60°C)
 DIMENSIONS: 28.584" (726MM) H x 11.309" (287MM) W x 14.150" (359MM) D
 WEIGHT: 97.5 LBS (44.2KG) @ 120/220/230V
 WEIGHT: 117.5 LBS (53.3KG) @ 400/480V
 REFRIGERANT CHARGE: R134-A 19OZ (539G)

| REV | DESCRIPTION | CHG | DATE | APP | DATE | CN # |
|-----|---------------------------------------|-----|------------|-----|------------|------|
| H | ADDED VOLTAGE AND FREQUENCY TOLERANCE | NAT | 9/2/2022 | | | |
| G | UPDATED AMPS | JJH | 9/1/2022 | | | |
| F | ADDED CFM, dBA, AND CLEARANCE INFO | RCC | 3/22/2018 | ART | 5/11/2018 | 1347 |
| E | UPDATED UNIT DATA | JGG | 12/15/2017 | ART | 12/15/2017 | 1336 |

| | | | |
|-------------|-----|---------|-----------|
| ITEM NUMBER | N/A | USED ON | IQ4000EV |
| MATERIAL | N/A | | |
| EST WT: | lbs | | |
| DRAWN BY | ART | DATE | 1/20/2016 |
| | | SCALE | 1:8 |

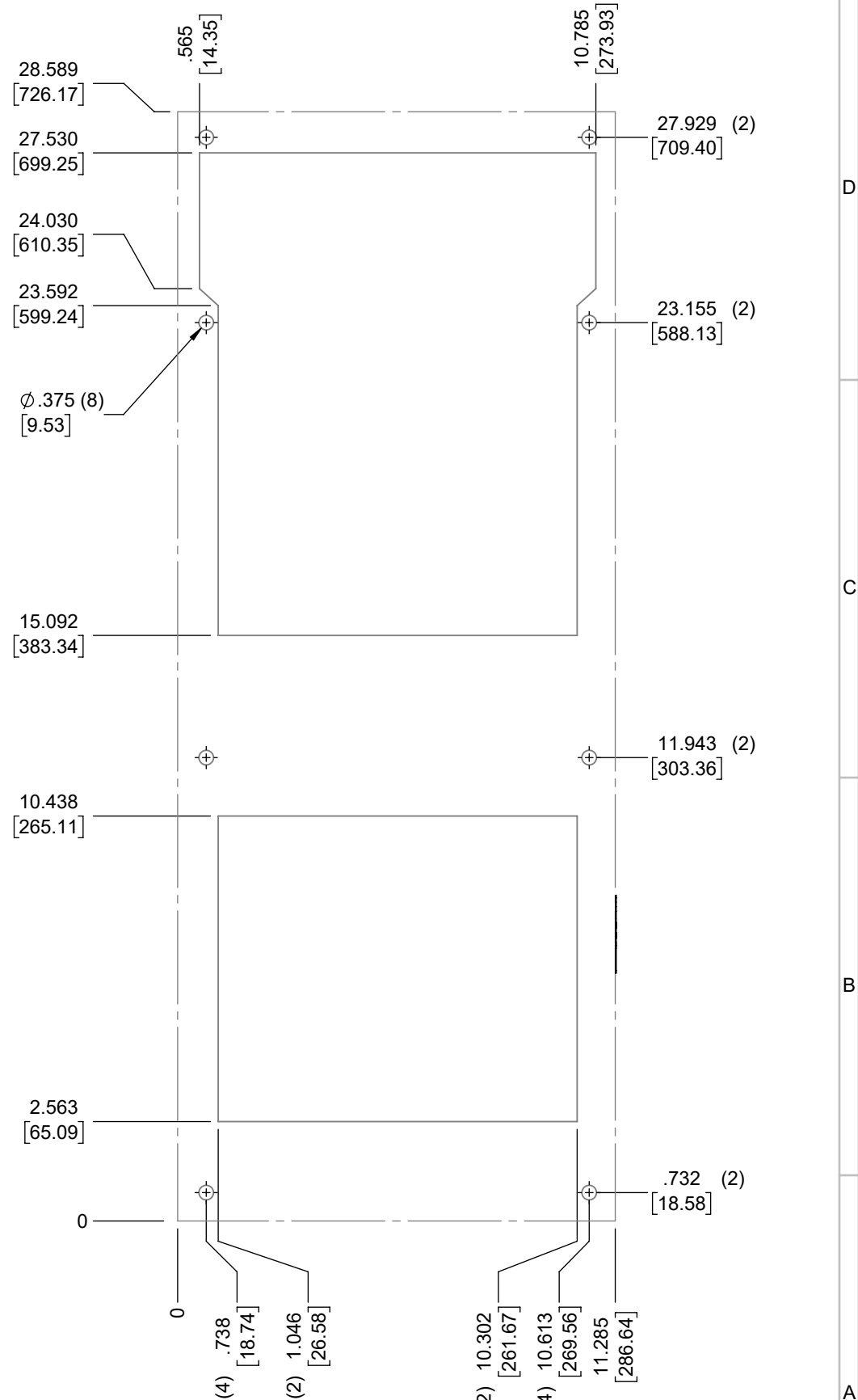
| | |
|--|------------|
| UNLESS OTHERWISE SPECIFIED TOLERANCES | |
| .X | \pm .060 |
| .XX | \pm .030 |
| .XXX | \pm .015 |
| FRACTIONAL | \pm 1/16 |
| ANGULAR | \pm 1/2° |
| SURFACE FINISH | 63 |
| DO NOT SCALE DRAWING DIMENSIONS ARE INCHES | |

ICE QUBE, INC.
 THIS IS A PROPRIETARY DOCUMENT. DO NOT REPRODUCE OR DISCLOSE WITHOUT THE EXPRESS WRITTEN PERMISSION OF ICE QUBE, INC.
 DESCRIPTION
IQ4000EV SPEC DRAWING
 DRAWING NUMBER
IQ350927
 REV
H



IMPORTANT
GASKET MUST BE APPLIED AS SHOWN FOR PROPER OPERATION AND TO MAINTAIN ENCLOSURE INTEGRITY

EVAP. OUTLET ≈ 360 CFM
 COND. OUTLET ≈ 510 CFM
 SOUND LEVEL @5FT FROM UNIT @ A HT. OF 3FT = 62 dBA
 SOUND LEVEL @2FT FROM UNIT @ A HT. OF 5FT = 65 dBA
 CONDENSER INLET MIN. CLEARANCE 2.54"



| | | | |
|----------------------------|---------------------|---|--|
| ITEM NUMBER N/A | USED ON IQ4000EV | UNLESS OTHERWISE SPECIFIED TOLERANCES X ±.060 XX ±.030 XXX ±.015 | <small>THIS IS A PROPRIETARY DOCUMENT. DO NOT REPRODUCE OR DISCLOSE WITHOUT THE EXPRESS WRITTEN PERMISSION OF ICE QUBE, INC.</small> |
| MATERIAL N/AN/A | | FRACTIONAL ±1/4 ANGULAR ±1/2° | |
| EST WT: DRAWN BY ART | DATE 1/20/2016 | SCALE 1:4 | DESCRIPTION IQ4000EV SPEC DRAWING DRAWING NUMBER IQ350927 |
| | | DO NOT SCALE DRAWING DIMENSIONS ARE INCHES | SURFACE FINISH 63 REV H |